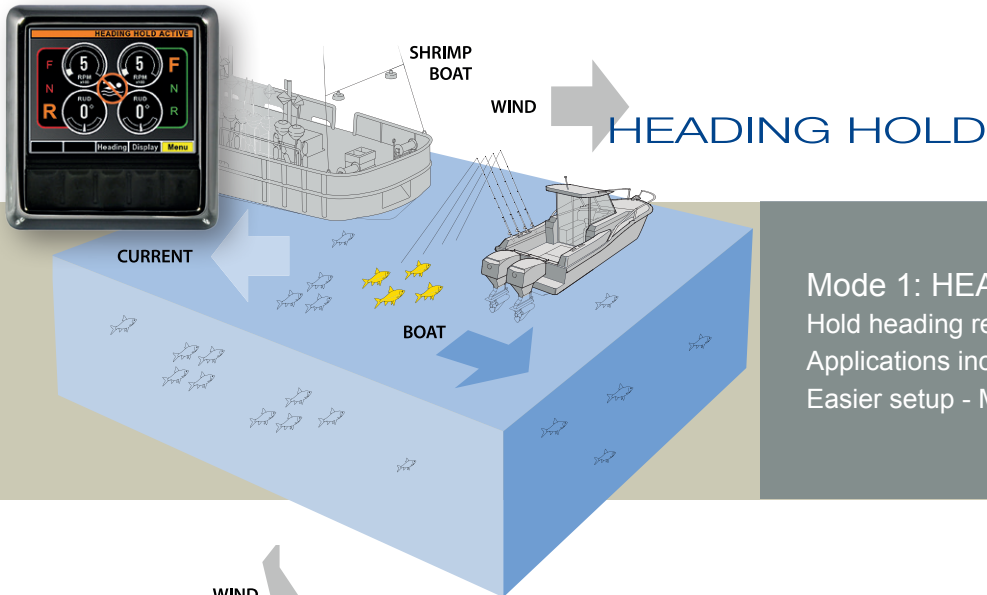
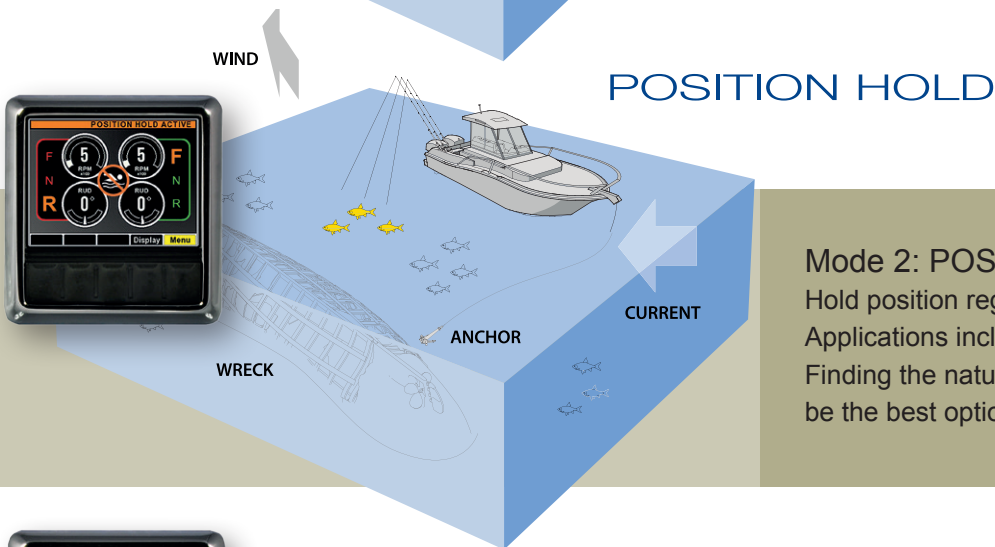


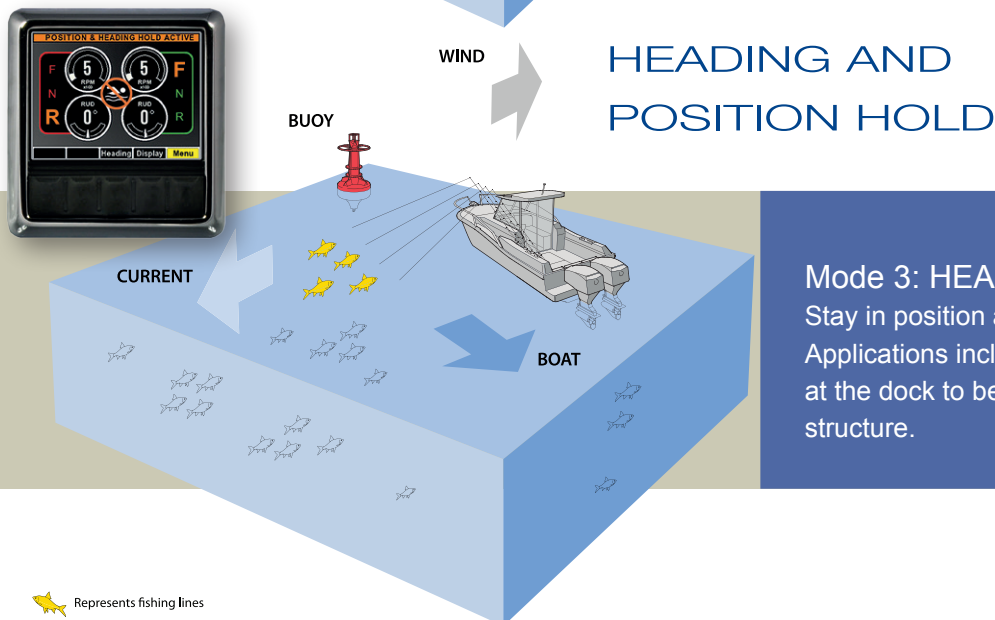
When you are trying to locate that ideal spot over a reef or a wreck, SeaStation is ideal. Just hold your position and heading, drop your lines and see if you have success, if not, simply move to another location and engage SeaStation. No physical anchor required.



Mode 1: HEADING HOLD
 Hold heading regardless of position.
 Applications include Kite fishing/Drift fishing.
 Easier setup - Maximize fishing time.



Mode 2: POSITION HOLD
 Hold position regardless of heading.
 Applications include bait fishing and wreck/reef fishing.
 Finding the natural heading when in position hold could be the best option.



Mode 3: HEADING AND POSITION HOLD
 Stay in position and hold heading.
 Applications include waiting for a bridge to open, a spot at the dock to become available and bait fishing near a structure.



EASY ADD-ON TO YOUR OPTIMUS 360 BOAT

SeaStar Solutions has applied the same smart algorithms to SeaStation as you have experienced with Optimus 360 joystick control to reduce unnecessary shifting and jockeying of the engines while providing superior position and heading functions for a large selection of engine platforms.

Captains have told us that we can't have the jarring from the engines shifting and unnecessary movement as it does not sound good and also could impact the fishing outcome.

We took this input seriously and we are confident SeaStation will be a fishing enabler.

Another common use for SeaStation will be when you are waiting for a spot to open at the dock or waiting for a bridge to lift. Simply push the A button or A&C buttons on the joystick, acknowledge via the Color CANtrak display and the boat will hold its position.

When ready to take command, simply toggle the A and/or C button off for control with the joystick.

As SeaStar adds more functions and features to SeaStation they will be available with s/w updates. Please contact your OEM or Optimus Certified dealer for more information.

WARNING: This is not to be used for any kind of swimming and diving.

SYSTEM REQUIRES:

Optimus 360 Joystick Control System

SeaStation Kit EPSK1600

includes: Dual antenna GPS sensor
DeviceNet CAN2 harness and T-connector
Software and sensor license activation code
Warning decals are provided to be placed near all boarding access points

Accuracy (target) ± 3 Meters Position hold
± 10° Heading hold

Sensor and mounting information:

Dimensions Not including mount: 25.9 L x 12.9 W x 4.5 H (cm)
10.2 L x 5.1 W x 1.8 H (in)
Including mount: 25.9 L x 12.9 W x 12.8 H (cm)
10.2 L x 5.1 W x 5.0 H (in)

Weight Not including mount: 0.42 kg (0.9 lb)
Including mount: 0.51 kg (1.1 lb)



A - Position
C - Heading



SEASTATION MODES

This is a safety step to make sure that all precautions have been taken to make sure there is nothing in the water when SeaStation is engaged. After pressing the A and C buttons on the joystick, the captain will be prompted to engage SeaStation by pushing the button on the CANtrak display.

HEADING ADJUSTMENT

Jog buttons have been created to adjust heading in five degree increments.

This feature allows heading adjustment without disengaging SeaStation to align the vessel stern to wind and current to reduce engine activity.

